

Page 155

This Indenture made the 27th day of September in the fifth year of Reign of our Sovereign Lord George the third by the grace of God of great Britain(?) and Ireland King defender of the faith and in the year of our Lord 1765 between George Klock, William Nellis, _____ Klock, Jacob Christian Nellis, Johannes Klock, Friterich Bellinger, George Klock, and Freterich Young in behalf of Johannes Hess deceased being appointed by the heirs by a power of attorney to them as executors Leonard Helmer Sevenius Dygert, Jost Klock, in behalf of Henry Klock deceased by a will to him Henry Walrath in behalf of Henry Walrath deceased John Windecker in behalf of George Windecker Jacob Graus and Daniel Miller in behalf of Godfred Helmer deceased appointed by his heirs by a power of attorney to them as executors(?) and Henry Klock of Canajohary in the County of Albany and Province of New York yeomans of the first part and Philip Pier of the same place _____ of the second part Wherefore the said party of the first part is seized in their demesnes¹ free of and is 450 acres of wood land which land is known by Lotts No. six ____ 136, 105, and the half of Lott 120 to the Southwestward and the 35th part of the ____ out of all that certain tract of land formerly granted by his ____ majesty King George the second by his certain letters patent under the great seal of the province of New York bearing date November 21, 1754 recorded in the secretaries office of the _____ New York did give grant ratify and confirm unto George Klock _____ Situate lying and being in the County of Albany on the *North side* of the Mohawk River the said tract of land begins at a _____

Page 156

At the _____ line of a patent granted to Frances Harrison Esq. and others at a _____ Runs from said place North 16 degrees 30 West 189 chains to a spruce pine tree then North 43 degrees 30 minutes West 123 chains to a stake then North 75 degrees 30 minutes West 145 chains to a black oak tree then North 68 degrees 30 minutes West 136 chains then South 48 degrees West 16 chains then North 41 degrees 30 minutes West 65 chains then South 48 degrees West 19 chains then North 68 degrees 30 West 70 chains to the Canada Creek and a spruce pine tree then up along said creek to a spruce pine tree being about 264 chains to the spruce pine tree on a Northwest course then from the said creek and spruce pine trees South 68 degrees 30 minutes East 427 chains to a spruce pine tree then South 75 degrees & 30 minutes East 190 chains to a sugar tree then South 43 degrees & 30 minutes East 226 chains to a beech tree then South 16 degrees 30 minutes East 156 chains to the Garoga Creek to a cornered marked tree then down the stream of Garoga Creek to the place of beginning containing 16,000 acres. The Patent is layed out into 165 lots of 100 acres each with allowance for highways and it is

¹ Held in one's own right and not that of a superior; not allotted to tenants

1765 George Klock & Others to Philip Pier, Book 1, Page 155-159

drawn for before two justices of the peace and the said Philip Pier drew the aforesaid Lotts.

Lot No. 6 begins at the Southwest corner of Lot No. 5 and runs from there North 35 degrees East 85 chains then North 16 degrees 30 minutes West 16 chains then South 35 degrees West 85 chains then to the place of beginning containing 100 acres .

Lot 67 begins at the Southwest corner of Lot 66 and runs North 35 degrees East 69 chains & 50 links then North 43 degrees 30 minutes West 15 chains & 50 links then South 35 degrees West 69 chains & 50 links the to the place of beginning containing 100 acres.

Lot 136 begins at the Southwest corner of Lot 135 then North 35 degrees East 72 chains then North 75 degrees 30 minutes West 16 chains then South 35 degrees West 72 chains then to the place of beginning containing 100 acres.

Lot 105 begins at the Northwest corner of 104 then South 35 degrees West to the Canada Creek

Page 157

(missing information) South 68 degrees 30 minutes East to the place of beginning containing 100 acres

Lot 120 begins at the Southwest² corner of Lot 119 and runs North 35 degrees East 34 chains & 75 links then North 43 degrees 30 minutes West 15 chains & 50 links then South 35 degrees West 34 chains & 75 links then to the place of beginning containing 50 acres, containing in all 450 acres and 35th part of common land.

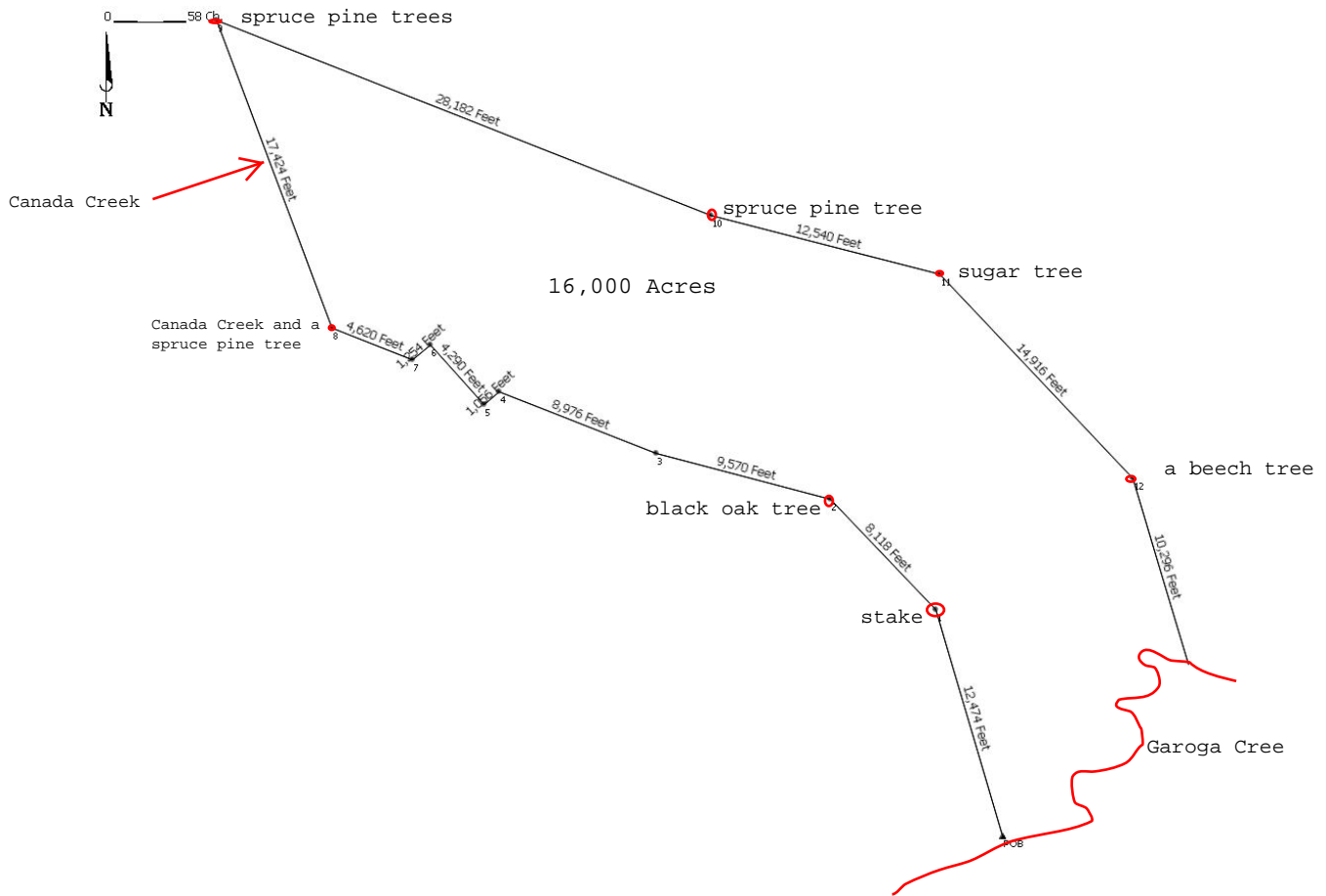
Now this Indenture Witnesseth that the parties of the first part for and in consideration of **£17 17 shillings and 1 pence** paid by Phillip Pier have granted, bargained, confirmed (and the usual language of conveyance) the above premises.

Note: The document was transcribed in part only. It was difficult to read as much of the information was missing or blurred. The last 2 pages were not transcribed. They contained a reiteration of the parties plus legal language of the time that I felt was not necessary. The purpose was to identify the parties and the land that was being conveyed. There was an added benefit: The full and complete legal description Klock-Nellis Patent.

² direction of this call was ascertained by examining the plat map

Klock-Nellis Patent

Note: The Canada Creek is drawn as a straight line although it winds & turns. The Garoga Creek was hand drawn to its approximate winding & turns.



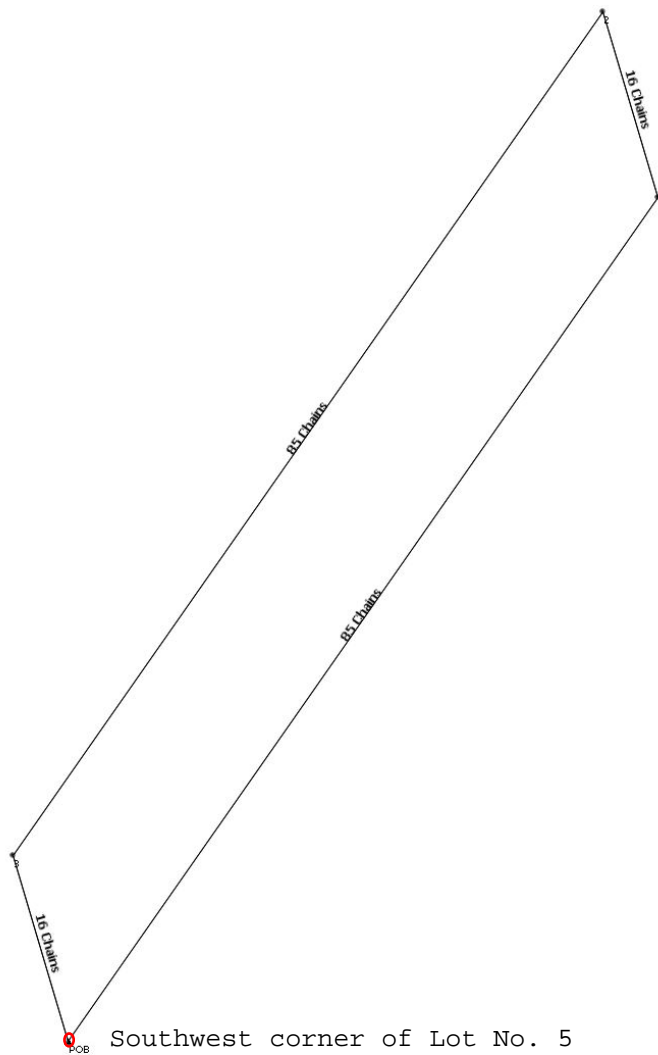
1765 George Klock & Others to Philip Pier, Book 1, Page 155-159

Lot 6

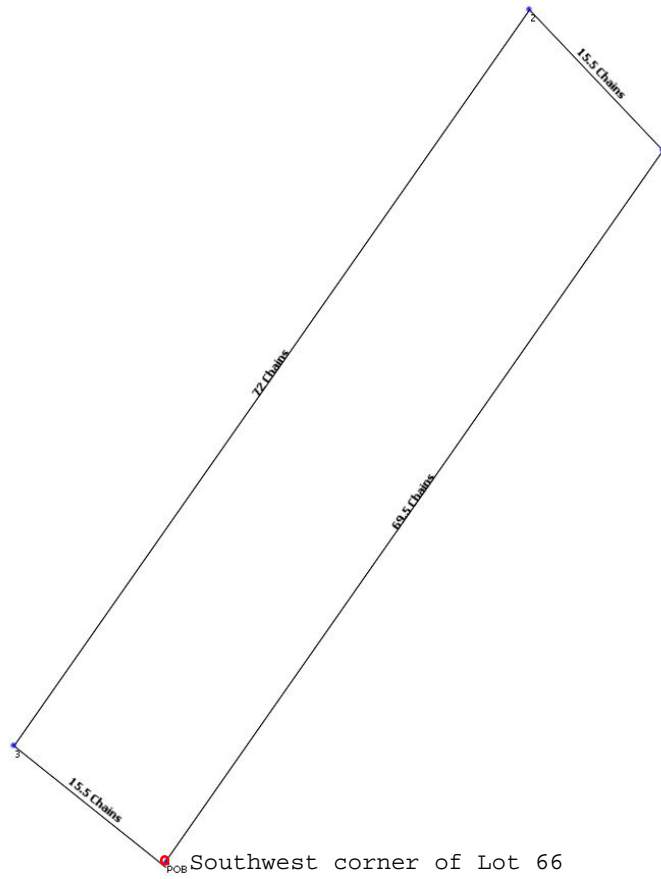
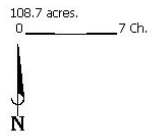
106.43 acres.



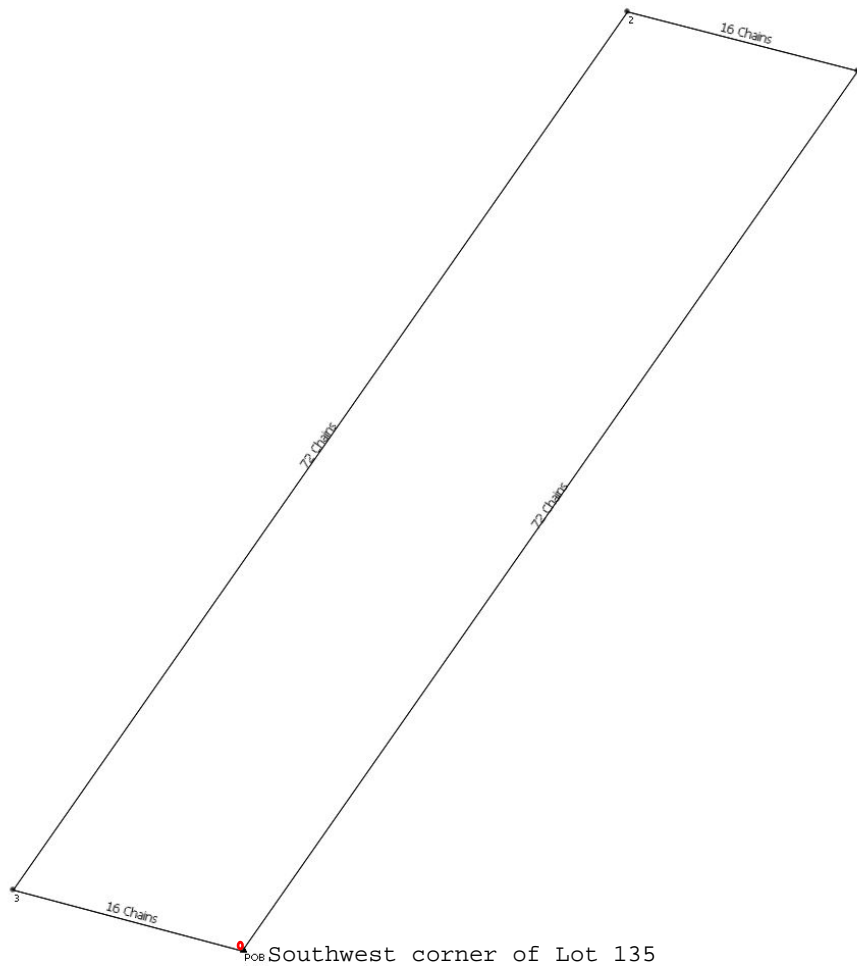
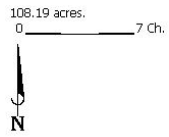
N 35 E 85 Chains
N 16:30 W 16 Chains
S 35 W 85 Chains
S 16:30 E 16 Chains



Lot 67



Lot 136



Lot 105

Note: There was insufficient description to create a survey sketch. Lot 105 was reproduced from a portion of the Klock-Nellis map.

Northwest corner of Lot no. 104



Lot 120

