

Abstract of Deed dated March 18, 1793
Recorded March 7, 1794
Montgomery Co., N.Y. Book No. 4, Page 357-361

Grantors: Adolf A. & Mary Walradt, Palatine, Montgomery Co., N.Y.

Grantee: Cornelius C. Beekman, Palatine, Montgomery Co., N.Y.

Consideration: **£260**

Description of land: 1/3 part of the 1/3 part of Lot 16 & 17 in the Francis Harrison Patent on the North side of the Mohawk River butted and bounded as follows: Beginning at the Southwest corner of the land in possession of Jacob G. Klock, Esq., then North 49 degrees East 30 chains then North 43 degrees 30 minutes West 3 chains & 50 links then due North 9 chains & 30 links to a marked white pine then South 73 degrees & 30 minutes East to the aforesaid land of Jacob G. Klock, Esq., then South 10 degrees West to the gate at the lane then South 36 degrees and 30 minutes West 4 chains & 14 links then South 49 degrees West 5 chains & 70 links then North 43 degrees and 30 minutes West 3 chains & 50 links then South 49 degrees West to the Mohawk River then down the River to the place of beginning containing 17 acres of land.

The **second** tract begins at the upper end of the tract at a stake standing near an Elm tree then South 80 degrees and 40 minutes East 10 chains or so far as to take in 3 acres & 2 roods of low or interval land then South 32 degrees & 30 minutes West to the Mohawk River then up the stream of said River to the place of beginning containing 3 acres & 2 roods of interval land present cleared.

The **third** tract begins at the Northwest corner Lot No. 18 then South 68 degrees East 5 chains & 66 links then South 49 degrees & 45 minutes West 95 chains & 60 links then South 68 degrees East 1 chain then South 29 degrees & 30 minutes West 32 chains & 60 links then North 54 degrees West 5 chains & 20 links then South 49 degrees West 34 chains to the Mohawk River then up the stream to Lot 18 then North 49 degrees East 164 chains & 60 links to the place of beginning containing 109 acres of land.

In all three tracts are contained 129 acres of low and upland which is intended to be the 1/3 part of 448 acres heretofore conveyed by George Klock to Adolf Walradt, now deceased (except 25 acres sold by Adolf Walradt, deceased) together with the short measure as the same as conveyed by George Klock to Adolf Walradt, deceased.

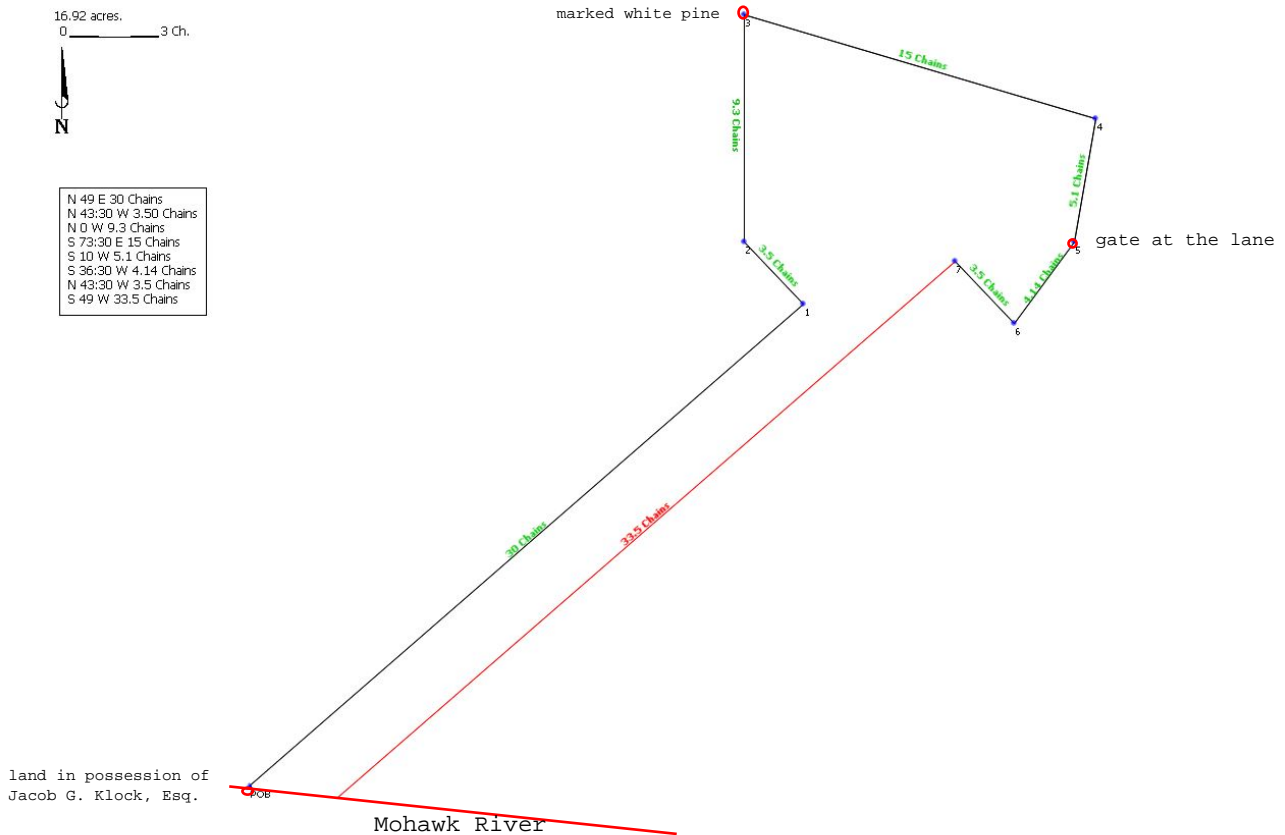
Witness: Johan A. Walrath, William Waldrath

Witness:

Note: At the time of this conveyance, March 18, 1793, Cornelius C. Beekman was in possession of the property, having purchased at a prior time on a contract. Cornelius was probably the husband of Adolf's niece, Catherine Walrath (daughter of John A. Walrath). With regards to the land described as Tract 3, there is a deed dated March 19, 1793 from Cornelius C. Beekman to John A. Walrath for the same land (see filename "1793 Cornelius Beekman 109 acres Lot 17 to John A. Walrath transcription.doc")

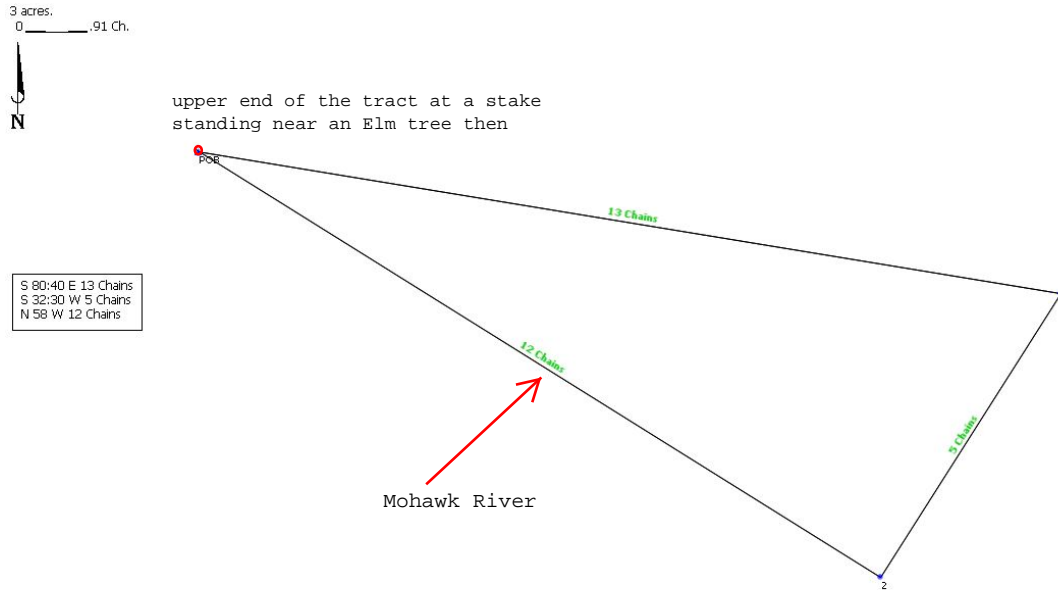
Tract 1

In this sketch the distance from point 3 to 4 (15 chains), 5 to 6 (gate at the lane) and from point 7 to 8 as well as the distance up the river has been approximated so as to contain 17 acres.



Tract 2

In this sketch, all distances have been approximated so as to create a parcel that contains 3 acres.



Tract 3

In this sketch, the only distance approximated is the distance along the Mohawk River.

