

Abstract of Deed dated April 6, 1799
Recorded November 18, 1807
Montgomery Co., N.Y. Book No. 10, Page 335-338

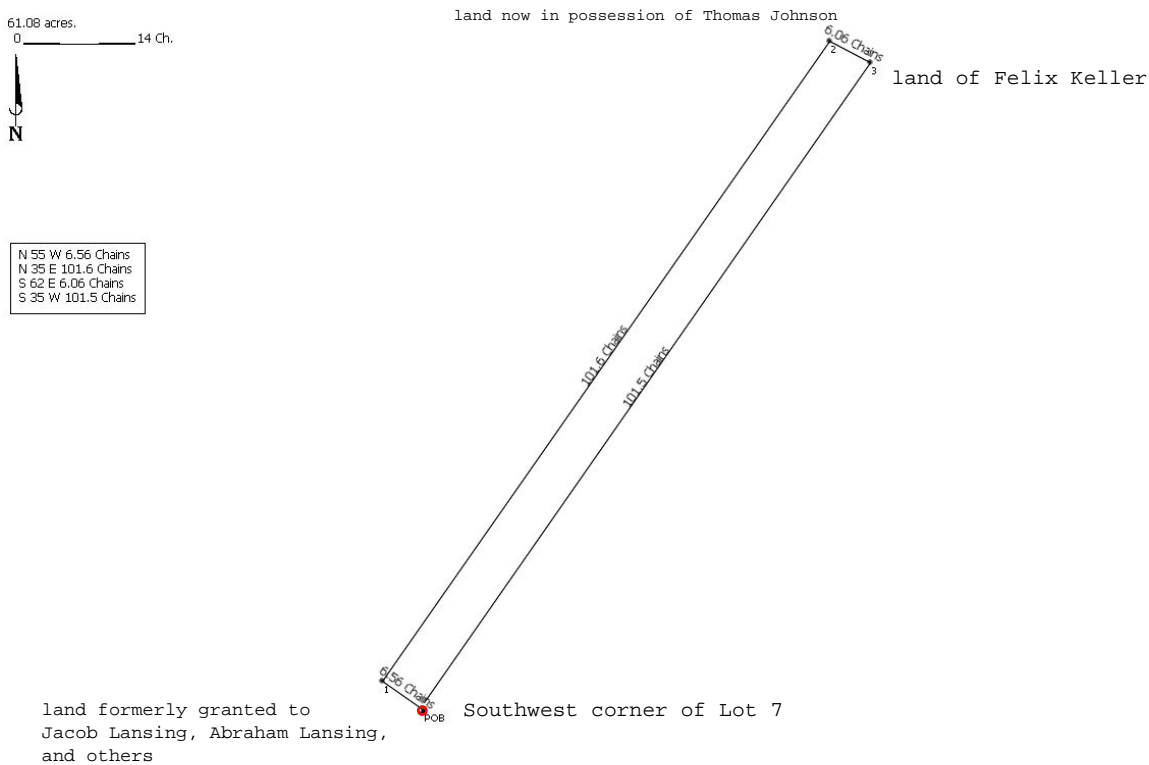
Grantors: Gerhard Walrath, blacksmith, Palatine, Tryon Co., N.Y.

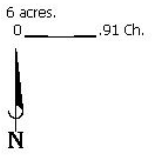
Grantee: William Timberman, Palatine, Montgomery Co., N.Y.

Consideration: **£150**

Description of land: In a patent granted November 12, 1731 to Hartman Windecker, Conrad Countryman and others, a true and equal 1/3 part of Lot 8 beginning at the Southwest corner of Lot 7 then along the line of land formerly granted to Jacob Lansing, Abraham Lansing, and others, North 55 degrees West 6 chains and 56 links then North 35 degrees East 101 chains & 60 links to the land now in possession of Thomas Johnson then along his land to the land of Felix Keller 6 chains & 66 links then along Keller's line South 35 degrees West 101 chains & 50 links to the place of beginning containing 66 acres of land ALSO 6 acres of land in Lot 7 in the same patent beginning 10 chains on a course North 53 degrees West from the Northwest corner of Lot 6 then North 53 degrees West 10 chains then South 35 degrees West 6 chains then South 55 degrees East 10 chains then North 35 degrees East 6 chains to the place of beginning containing 6 acres of land so that both parcels contain in the whole, 72 acres of land.

Witness: Dewald Zimmeran, John Pickard





N 53 W 10 Chains
S 35 W 6 Chains
S 55 E 10 Chains
N 35 E 6 Chains

